

ROYAL BALAJI ENGINEERING®

Royal Balaji

ENGINEERING



Windmill



Power
transmission



oil and
natural gas



bridge



Railway
Industry

CE – 106, Salt Lake City, Sector – 1, Kolkata – 700 064.
Near Arunachal Bhawan.

Company Profile

Board of Directors

Royal Balaji Engineering is a part of Balaji Group. Balaji Group was started by Sri Balaram Agarwal in 1981. Mr. Ritesh Agarwal joined in 2008.

Our History

In 2008 Royal Balaji Engineering (RBE) was incorporated with the objective of manufacturing Fasteners (GI, SS, HT & HSFG) and other engineering goods. Our factory is spread over 125000 sq. ft. with the latest machinery and in-house facilities for secondary operations.

In 2020 Lakshmi Balaji incorporated with an aim to cater to the export market.

In 2021 RBE Unit 2 started on Ranihati Amta Road, a few kilometers away from the existing unit.

Technology and innovation are the heart of our business. Our production capabilities are Mild Steel, Stainless Steel, High Carbon Steel, Bolts, Nuts, Screws, Rivets, Studs, etc. of different grades and specifications with Self Colour / Plated / Hot Dip Galvanized finishing.

We also manufacture MS / GI Sockets and Flanges (MS, Stainless, Carbon). Our company takes pleasure in manufacturing special products as per drawings/specifications. Customers are our highest priority. We are committed to ensuring that we protect our customer's interests and meet delivery timelines.

We are approved by 20+ Electricity Boards & Indian Railways.

Our USP:

- ◆ State-of-the-Art Infrastructure
- ◆ Timely Delivery
- ◆ Complete Customer Satisfaction
- ◆ Committed to quality. 100% quality is a motto.
- ◆ We cater to quality not quantity
- ◆ ISO 9001:2008 certified company
- ◆ Cost efficient
- ◆ Good products with great value

Industries We Serve

- ◆ Renewable Energy (Wind, Hydro, Turbine)
- ◆ Transmission Towers, Structural, Bridges, Railways, Petrochemical, PEB, and Construction
- ◆ Automobile, Agricultural.



Director's Profile

Ritesh Agarwal

Work Experience

Founder and Director - Royal Balaji Engineering Pvt. Ltd. (2008-Current)

Mr. Agarwal has been a consistent performer in every sphere of life winning many accolades and holding different positions of responsibility throughout. In his professional career for the last 18 years, he has achieved his goals and set new benchmarks. He has developed a good understanding of IT, Engineering components for transmission, Railways, and the Electrification Industry. Royal Balaji Engg. has a marquee list of customers.

Areas of Interest

Electricity Transmission and Distribution

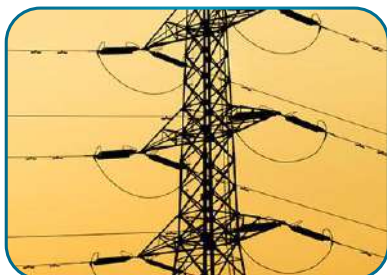
Micro Irrigation and Solar irrigation

Information Technology

Professional Memberships

IEEMA and CII

Industries We Serve



Our Infrastructure



Infrastructure

Total land area of 2 lakh sq. ft. and production shed area of 1.25 lakhs sq. ft. at Ranihati, Amta Road, Howrah (Unit 2) in the state of West Bengal, India with an install capacity of 700 MTPM. We have another factory area at Dhulagarh, NH 6, Howrah (Unit 1) in the state of West Bengal, India.

We have been manufacturing GI, SS, HT & HSFG Fasteners and Fittings with our State-of-the-Art infrastructural facility since its inception. Our products are manufactured under the brand name of 'RBE'.

We have in-house manufacturing facilities/tie-up for Surface Finish (Hot Dip Galvanizing/Plating/Phosphating/Geomet and others).

We go through a rigorous quality-checking process for our finished products in our state-of-the-art Quality Lab.

List of Machinery

- ◆ Bolt Header
- ◆ Bolt Former - Taiwan
- ◆ Nut Former
- ◆ Nut Former - Taiwan
- ◆ Nut Tapping Machine
- ◆ Roll Thread
- ◆ Trimming Machine
- ◆ Wire Draw
- ◆ Power Press
- ◆ Hydraulic Press
- ◆ Hot Forging
- ◆ EOT Cranes
- ◆ Drilling Machine
- ◆ Nut-Bolt auto assembly machine
- ◆ Galvanizing Plant
- ◆ Facilities for Electro Plating
- ◆ Heat Treatment Furnace

Shop Floor Machines

- ◆ Lathe Machine
- ◆ Shaper
- ◆ Surface Grinder



Product

GI Fasteners



Hex Screw



Foundation Bolt



Plain Washer



GI Nut



Hex Screw



Foundation Bolt



Plain Washer



GI Nut

Technical Specification

MATERIAL	GRADE	PRODUCT RANGE	LENGTH	STANDARD	PRODUCTS
Alloy Steel (Low Medium and High Carbon Steel Grade)	4.6/4.8/5.6/6.8/8.8/10.9/12.9	M8 TO 33 MM	M8 TO M10 UP TO 150 MM M12 TO M33 UP TO 500 MM		HEX SCREW, HEX BOLT, SOCKET SCREW, SOCKET BOLT, FLANGE SCREW & BOLT, SQUARE NECK BOLT, BUTTON SCREW, WOOD SCREW, ALLEN CSK SCREW, STUD BOLT, U-BOLT, V-BOLT, T-BOLT, D-BOLT, J-BOLT & RIVET. HEX NUT, FLANGE NUT, SQUARE NUT, ETC. AND AS PER CUSTOMER'S REQUIREMENT.



Product

SS Fasteners



SS U Bolt



Allen CAP Screw



Allen CSK Screw



Anti-Theft Bolt



Button Head Screw



Flange Screw and Bolts



Hex Nuts



Square Neck Bolt

Technical Specification

MATERIAL	GRADE	PRODUCT RANGE	LENGTH	STANDARD	PRODUCTS
304, 316, 302, 201	A2-50, A2-70,- A2-80, A2, A4-50, A4- 70, A4-80, A4	M6 TO M16	M6 TO M8- UP TO 100 MM M10 TO M16 - UP TO 150 MM	DIN, ISO, IS, ANSI/ASME/JIS	HEX SCREW, HEX BOLT, SOCKET SCREW, SOCKET BOLT, FLANGE SCREW & BOLT, SQUARE NECK BOLT, BUTTON SCREW, WOOD SCREW, LN CSK SCREW, STUD BOLT, U-BOLT, V-BOLT, T-BOLT, D-BOLT, J-BOLT & RIVET. HEX NUT, FLANGE NUT, SQUARE NUT.



Product

HT & HSFG Fasteners



HT Bolts & Nuts



Allen CAP Screw



Automobile Fasteners



Hot Forge Bolts



HT Bolt



HT Button Head



HT Coated Nut & Stud Bolt



HT Galvanizing Bolt

Technical Specification

MATERIAL	GRADE	PRODUCT RANGE	LENGTH	STANDARD	PRODUCTS
High Carbon Alloy Steel	8.8/10.9/12.9	M8 TO 33 MM	M8 TO M10: UPTO 150 MM M12 TO M33: UPTO 500 MM	DIN, ISO, IS, ANSI/ASME/JIS	HEX SCREW, HEX BOLT, SOCKET SCREW, SOCKET BOLT, FLANGE SCREW & BOLT, SQUARE NECK BOLT, BUTTON SCREW, WOOD SCREW, LN CSK SCREW, STUD BOLT, U-BOLT, V-BOLT, T-BOLT, D-BOLT, J-BOLT & RIVET. HEX NUT, FLANGE NUT, SQUARE NUT.



Product

Fittings



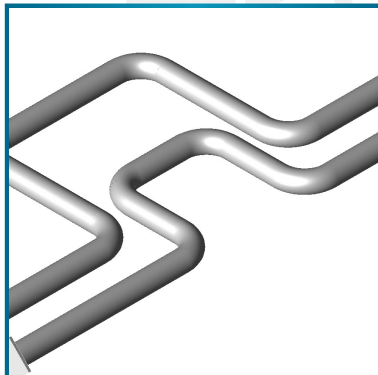
Anchor Bolt



Anchor Loop



Earthing Pipe



Horizontal Loops



V Bolt



Turn Buckle



Single Clevis



Tubular Stay Sleeve



Product

Fabrication Items



GI Solar Panel Mounting Structure



MS Pipe Bend & Flange



Sintex SMC Panel Water Tank



Solar Module Mounting Structure Design



Pipeline



Water Tank Structure

ROYAL BALAJI ENGINEERING®



Quality Assurance



Raw Material Inspection procured from Primary Steel Plants



Rigorous Inline Inspection



Product Traceability & Batch No. process



We have a good set-up Quality Lab which is equipped with advanced Testing Equipment and dedicated BE/Diploma certified employees.



Total Adherence to Safety

List of Testing Infrastructure

- UTM Machine capacity of 100 MT
- Microscope
- Profile Projector
- Rockwell Hardness Tester
- Brinell Hardness
- Impact Testing Machine
- Spectrometer
- MPI Testing Machine
- Ring Gauges
- Gauges
- Various types of other Instruments
- Various Fixtures.



Microscope & Profile Projector



Spectrometer



Rockwell Hardness Tester



MPI Testing Machine



Impact Testing Machine



Vickers Hardness Tester



Universal Testing Machine



CSR

We support child education facilities in Chetan Jyoti Ashram, Haridwar.

Child Learning:

We support the skill development of youth.



ESG

We respect the environment, social goals, and safety.

We support the planting of saplings, recycling of water, and other resources.



Reach Us

Corporate Office



Royal Balaji Engineering Pvt. Ltd.

Balaji House

CE - 106, Salt Lake City, Sector - 1, Kolkata - 700 064. Near Arunachal Bhawan.

Registered office



Royal Balaji Engineering Pvt. Ltd.

153/2B, APC Road, Kolkata - 700006.

Unit - 1

NH-6, Bombay Road, Opp. Sudha Ras Food Park, Dhulagarh, Sankrail, Howrah - 711302

Unit - 2

Gabberia Suvahara, Near Gabberia Hospital, Ranihati Amta Road, Howrah - 711322



+91 99039 76518
+91 99038 23390



info@rbeindia.net

ENGINEERING®

